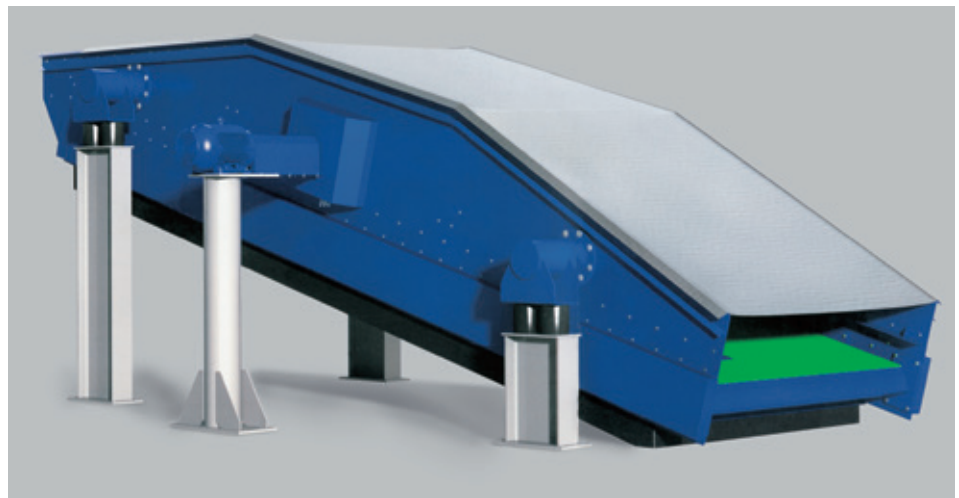




International Combustion (India) Limited

FLIPOMATTM Mk II

FLIP-FLOP SCREENING MACHINE



Optimum screening performance, even with the most difficult bulk materials

IC has launched the new generation of flip-flop screening machines, the FLIPOMAT Mk II. The machines with state of art technology are manufactured under license from Fleximat Ges.m.b.H., Austria a pioneer in design and development of low head flip-flop machines and Fleximat screen decks.

Separations of high volume of small particle sizes, and near mesh particles with high moisture content, and demands of stringent screening quality, are requirements in Mining, Steel Plants, Mortar & Sand Plants, Chemicals and Coal / Lignite for Power Plants. THE FLIPOMAT Mk II SCREENING MACHINES ARE IDEAL FOR SUCH APPLICATIONS.

APPLICATIONS

Difficult screening applications

- high moisture content
- high clay content
- material with blinding characteristics
- Fibrous and matted substances
- fine screening

INDUSTRIES

Processing and recycling technology

- moist and fine coal / power stations
- cement industry
- iron and steel industry
- mineral industry
- quarries
- recycling plants
- sand and gravel industry
- waste processing

Manufactured under license from

Fleximat Ges.m.b.H.
Austria

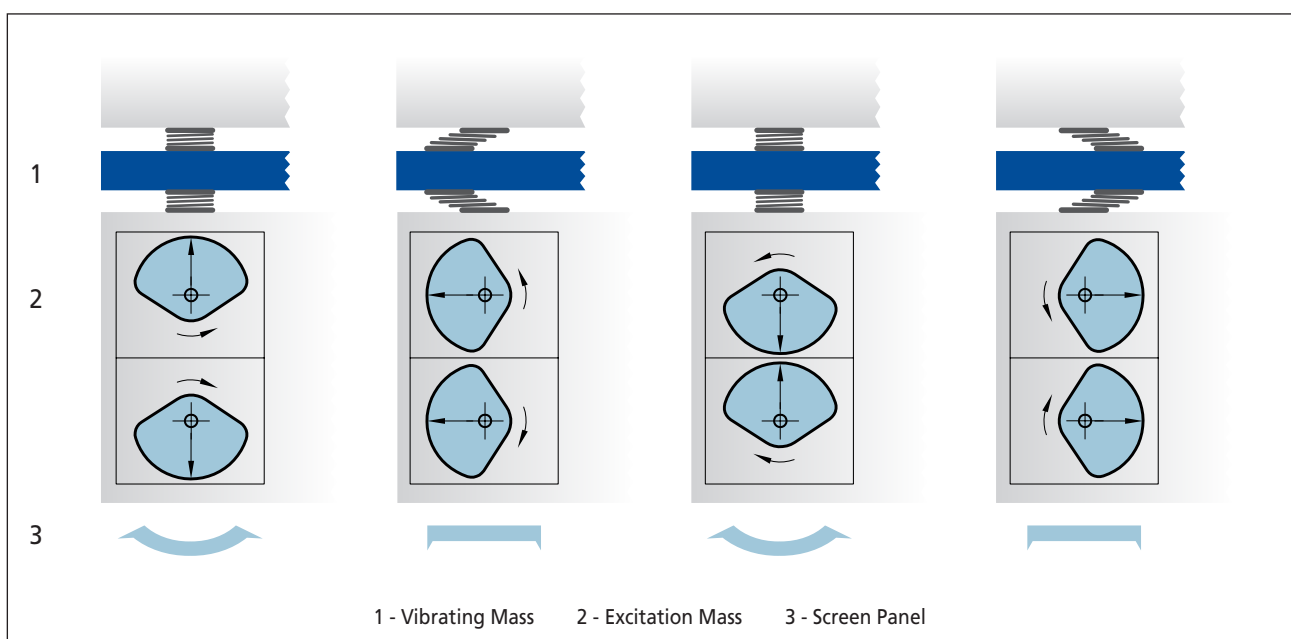


Operation Principle

The FLIPOMAT Mk II, Flip Flop Screening Machine, is available in single and double deck configurations. The banana shape and high acceleration on the flexible Polyurethane Screen panels ensure blockage free screening of moist and sticky material.

The unique trampoline movement, alternate "stretch and relax", of the Polyurethane Screen panels is generated through **Circular or Linear vibratory movement**, with both options being available with the FLIPOMAT Mk II machines.

The FLIPOMAT Mk II machine operates through twin vibration principle - that is primary oscillations from a circular or linear motion excited screen, with superimposed secondary vibration, that produce elliptical motion generated by the primary oscillations.





Direct Force Exciters

IC Directional Force Exciters feature long service life, unexcelled quietness of operation and high adaptability. The Exciter has twin shafts fitted with unbalanced masses that are geared to rotate in opposed directions at the same speed. The centrifugal force components add up to the resultant force. Maintenance is limited to an occasional check of the oil level, or oil change at prescribed intervals. For all directional force exciters suitable universal joint shafts are available.



Circular Motion Exciters

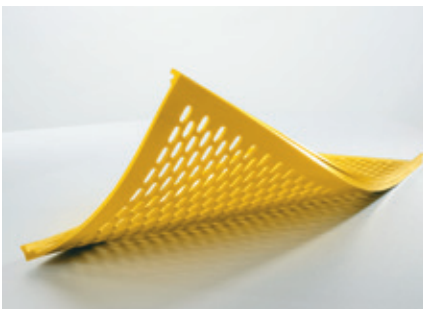
The exciters are of simple and rugged construction. The swing segment with unbalance masses rotate and generate centrifugal forces. Drive is from external electric motor, through an universal joint Cardan Shaft. IC Circular Motion Exciters are grease lubricated and maintenance is easy and minimal.

FLIPOMAT Mk II - Types & Sizes

SL NO	SCREEN SIZE (MM)	Approx Screening area available (In Sq.M)	Type of Motion	Motor Power (KW)
SINGLE DECK SCREEN				
1	1500 X 4600 SD	6	CIRCULAR	11
2	1800 X 5600 SD	9	CIRCULAR	15
3	2100 X 6600 SD	12.6	CIRCULAR	15
4	2400 X 7600 SD	16.8	CIRCULAR	30
5	2700 X 8600 SD	21.6	CIRCULAR	30
6	3000 X 9600 SD	27	LINEAR	45
7	3000 X 10600 SD	30	LINEAR	45
8	3000 X 11600 SD	33	LINEAR	45
9	3000 X 12600 SD	36	LINEAR	45
DOUBLE DECK SCREEN				
10	1500 X 5600 DD	7.5	CIRCULAR	22
11	1800 X 5600 DD	9	CIRCULAR	30
12	2100 X 6600 DD	12.6	CIRCULAR	30
13	2400 X 7600 DD	16.5	CIRCULAR	30
14	2700 X 8600 DD	21.6	LINEAR	45
15	3000 X 9600 DD	29	LINEAR	55

Special Features

- Wear on the sides of the screen is prevented by OXBOW system and provide effective side sealing to prevent material spillage.
- The FLIPOMAT Mk II, Flip Flop machines come with highly flexible punched Polyurethane screen panels, for optimum screening performance and highest wear resistance.
- The screen panels are fitted without use of fasteners to facilitate fast replacement. No screws at joints to avoid, material flow restriction and blinding due to deposition of fines.
- The Exciter drive units provide quick and easy adjustment through different settings of unbalance masses.
- The FLIPOMAT Mk II, Flip Flop machines require very low head room, generally slope not exceeding 15°.
- The machines are mounted on “marshmallow” (hollow) rubber springs, for very low noise level during operation, provides high life time and optimum machine vibration characteristics.



Performance

Throughput *t/h	3 - 750
Grain sizes *mm	0 - 80 (*300)
Screen cut *mm	0.5 - 45 (*75)

*fibrous and matted substances

Machine Data

Effective screen width *mm	900 - 2700
Effective screen length *mm	3670 - 8330
Screen area, each deck *m ²	3.3 - 22.5
Number of screen decks	1 - 3
Screen gradients *degrees	5 - 18 max.

Screen Panels

High resistant polyurethane	Screwless mounting
-----------------------------	--------------------

Acceleration values

Screen body *g	2.0 - 3.5
Screen mats *g trampoline effect	35 - 50



IC International Combustion (India) Limited

REGISTERED OFFICE

INFINITY BENCHMARK, 11th Floor, Plot-G1, Block-EP & GP, Sector – V, Salt Lake Electronics Complex, Kolkata – 700 091
Ph: (033) 3315 3000, Fax : (033) 2357 6653, e-mail: info@internationalcombustion.in, Website: www.internationalcombustion.in